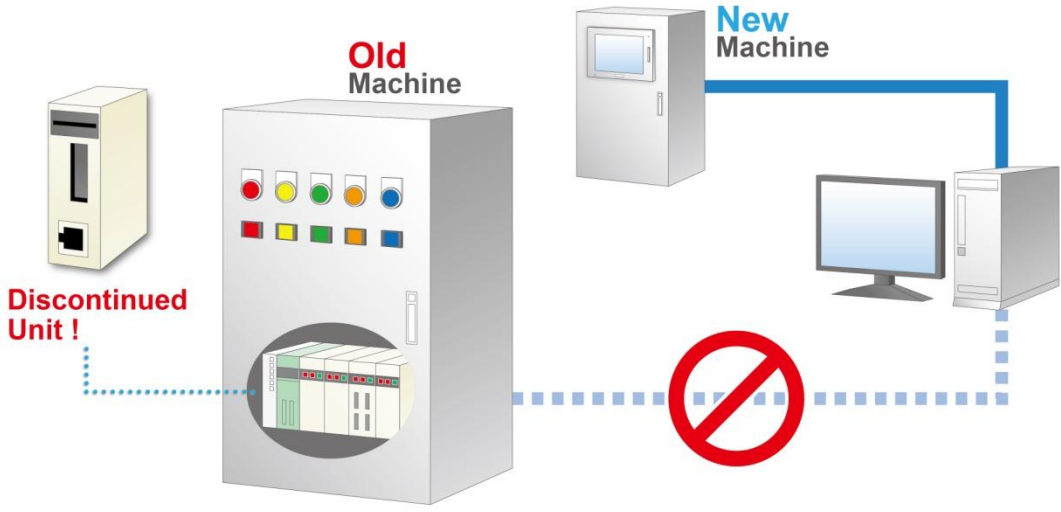


# Traceability without the need of updating the entire old equipment

**Before**

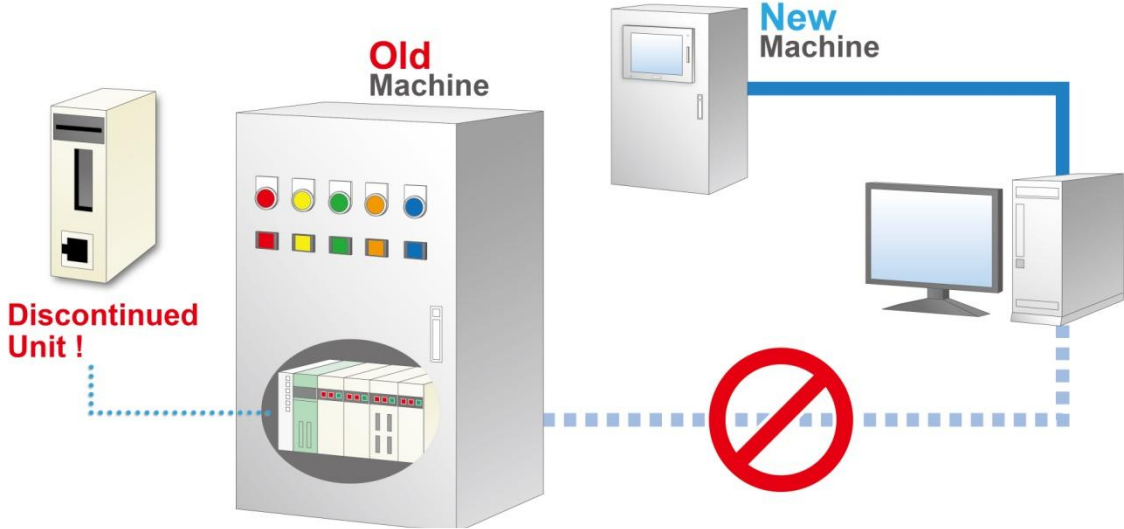
Introducing traceability is a task to deal with a range of regulations. Networking is required for the old equipment, but it's difficult because of discontinued units.



**Using Multi-Converter**

**After**

Adding Multi-Converter makes networking of the old equipment possible. Just connecting it to PLC via a CPU port allows you to easily collect data.



Setting up a network between old and new equipment facilitates traceability.

# System Configuration

Using Multi-Converter allows you to collect information on a range of devices including PLC.

Just configure settings on software for data collection  
Use Pro-Server EX, and no programming will be required.  
Able to collect data in a familiar Excel format.



**No need of adding a unit for connection**  
Since an available CPU port can be used for connection, replacement with a networking-compatible PLC isn't required.

**Easy maintenance of ladder programs**  
Using the pass through function allows you to debug ladder programs via Multi-Converter.  
Unnecessary to switch the CPU port cable.

## Multi-Converter

Connects to PLCs made by over 30 manufacturers.



### Configuration

Model	Description
PFXLM4B01DAC	DIN12, DOUT6, AIN4, AOUT2 (source)
PFXLM4B01DAK	DIN12, DOUT6, AIN4, AOUT2 (sink)
PFXLM4B01DDC	DIN20, DOUT10 (source)
PFXLM4B01DDK	DIN20, DOUT10 (sink)
PFXGM4B01D	Without IO

Model	Description
PFXZXMADSA1	DIN rail-installing adapter with hooks

**Global Headquarters**  
Tel: +81 (0)6 6208 3133  
info@pro-face.com

**South-East Asia Pacific**  
Tel: +66 (0)2 617 5678  
pfsales@proface.co.th

**European Headquarters**  
Tel: +31 (0)23 55 44 099  
info@proface.eu

**Italy**  
Tel: +39 (0)362 59 96 1  
info@proface.it

**Denmark**  
Tel: +45 70 22 01 22  
info@proface.dk

**China**  
Tel: +86 (0)21 6361 5175  
proface@proface.com.cn

**India**  
Tel: +91 80 4333 3540/3541  
sales.proface@proface.co.in

**France**  
Tel: +33 (0)1 60 21 22 91  
info@proface.fr

**Poland**  
Tel: +48 (22) 465 66 62  
info@proface.pl

**Russia**  
Tel: +7 (812) 336 47 06  
info@pro-face.ru

**Singapore**  
Tel: +65-6832-5533  
info@proface.sg

**Australia and New Zealand**  
Tel: +61 (0)3 9550 7396  
pfau@pro-face.com

**Austria**  
Tel: +43 7236 3343 620  
info@proface.at

**Sweden**  
Tel: +46 46 540 90 70  
info@proface.se

**South Korea**  
Tel: +82 (0)2 2630 9850  
proface@proface.co.kr

**Indonesia**  
Tel: +62 21 750 4496  
info@proface.co.id

**United Kingdom**  
Tel: +44 (0)2476 511288  
info@proface.co.uk

**Switzerland**  
Tel: +41 (0)43 343 7272  
info@proface.ch

**Taiwan**  
Tel: +886 (0)2 2657 1121  
proface@proface.com.tw

**North America**  
Tel: +1 734 477 0600  
info@profaceamerica.com

**Germany**  
Tel: +49 (0)212 258 260  
info@pro-face.de

**Spain and Portugal**  
Tel: +34 (0)93 846 07 45  
info@proface.es